



Welcome to  
Rydon  
Primary  
School

# Purpose of the meeting



Aims of the meeting:

- To meet your child's class teacher and phase leader
- To understand routines and arrangements for the upcoming year.
- To outline the expectations of your child.
- To explain the curriculum at Rydon.
- To answer any questions you might have.

# Meet the Phase Staff:



**Mr Ware**  
Yr 6 Teacher  
Phase Leader



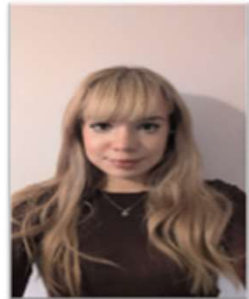
**Mr Statham**  
Yr 6 Teacher  
Maths Lead



**Mrs Parsons**  
Yr 5 Teacher



**Miss Boddy**  
Yr 5 Teacher



**Ms Sant-Jennings**  
Support staff



**Mrs Davies**  
Support staff



**Mrs Moore**  
Support staff

# Senior Leadership Team



Mr Danny Brown



Miss Tina Rootham



Mrs Clare Crowe



Mrs Carole Welsh



Mr Chris Ware



Mr Michael Statham

# Routines

- Morning: Classroom doors open at 8:45am
- Early morning retrieval and assemblies to start the day
- Golden mile
- Lunch: 12:00 – 1:00pm
  - Playgrounds now zoned with different activities
  - Final 10 minutes of lunch is independent or class reading
- Collection: 3.15pm
- PPA arrangements: Year 6 – Mr Brown/Mrs Evans  
Year 5 – Mrs Evans/Mrs Booth
- PE days: Year 6 – Thursday & Friday, Year 5 – Tuesday (both)  
Thursday (5B), Friday (5P)



# What your child needs to bring everyday....



A **rucksack** clearly named so that your child can identify their own bag easily. This is where your child will carry their snack, reading book and homework.



A fruit **snack** for play. Please name it.  
A named drinks bottle, water only please.



# Timetables



## 5B – Miss Boddy

	8:45	9:00	9:05	9:20	10:20	10:35	11:05	12:00	12:50	1:00	1:15	2:00	2:15	3:00	
Monday	EMW	Register	Assembly	Maths	Golden Mile	Reading	Writing	Lunch	Ind. Reading	Spelling	Science	Break	Science	Class story	
Tuesday				Maths		Reading	Writing			Spelling	History/ Geog		PE outdoors		
Wed				Maths		French	Writing			Spelling	Music		RE		
Thursday				Maths		PE				Reading	Writing		PSHE		
Friday				Maths		Reading	Writing			Spelling	Comp		Art/DT		

## 5P – Mrs Parsons

	8:45	9:00	9:05	9:20	10:20	10:35	11:05	12:00	12:50	1:00	1:15	2:00	2:15	3:00
Monday	EMW	Registe r	Assembly	Maths	Golden Mile	Reading	Writing	Lunch	Ind. Reading	Spelling	PSHE	Break	Art/DT	Class story
Tuesday				Maths		Reading	Writing			Spelling	PE outdoors		History/Geog	
Wed				Maths		Reading	Writing			Spelling	RE		Music	
Thursday				Maths		Reading	Writing			Spelling	Science		Science	
Friday				Writing		PE Indoors				French	Maths		Comp	

## 6W – Mr Ware

	8:45	9:00	9:05	9:20	10:20	10:35	11:05	12:00	12:50	1:00	1:15	2:00	2:15	3:00
Monday	EM W	Register	Assembly	Maths	Golden Mile	Reading	Writing	Lunch	Ind. Reading	Spelling	Science	Break	Science	Class story
Tuesday				Maths		Reading	Writing			Spelling	Comp		PSHE	
Wed				Maths		Reading	Writing			Maths			Art/DT	
Thursday				RE		Reading	Writing			Spelling	PE Indoors		Music	
Friday				Maths		French	Writing			Spelling	History/Geo g		PE outdoors	

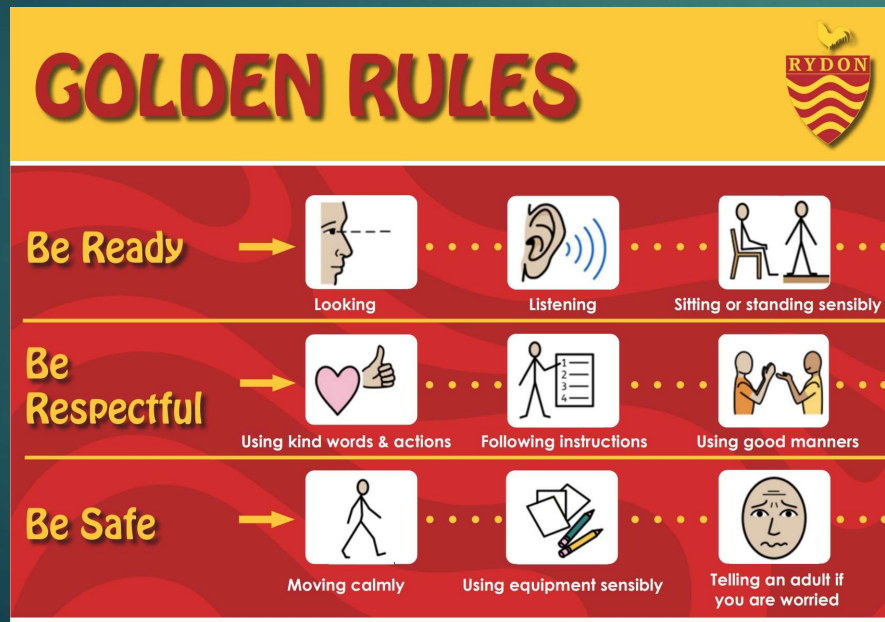
## 6S – Mr Statham

	8:45	9:00	9:05	9:20	10:20	10:35	11:05	12:00	12:50	1:00	1:15	2:00	2:15	3:00
Monday	EMW	Register	Assembly	Maths	Golden Mile	Reading	Writing	Lunch	Ind. Reading	Spelling	Science	Break	Science	Class story
Tuesday				Maths		Reading	Writing			Spelling	PSHE		Comp	
Wed				Maths		Reading	Writing			Maths			Art/DT	
Thursday				RE		Reading	Writing			Spelling	Music		PE indoors	
Friday				Maths		French	Writing			Spelling	PE outdoors		History/Geog	

# Behaviour and attitudes

New behaviour policy was launched last term:

- New incentives
- Golden rules
- House points for showing values





# How will I know how my child is doing?



- ▶ Come in and talk to a member of staff.
- ▶ Class Dojo – NEW!
- ▶ Workshops - reading, maths – dates on the newsletter.
- ▶ Insight Mornings.
- ▶ Parents' evening in Autumn Term and Spring Term.
- ▶ Friday celebration assembly.
- ▶ Weekly newsletter.



All parents will have received an email along with a paper copy containing the following information. Parents can expect to receive:

- A Friday message from the class teacher, sharing what your child has been learning and what's coming up,
- Reminders,
- Updates throughout the week.

Teachers can be contacted directly. However, we kindly ask that messages are respectful and that you are mindful of the timing. Please note that teachers will not respond during class time, in the evenings, or at weekends.

# Our Curriculum



Each phase has a page on our school website; you can find out more about the curriculum and what your child is learning each half term on here.

[www.rydonprimary.org.uk/curriculum/subject-information/](http://www.rydonprimary.org.uk/curriculum/subject-information/)

# Homework



- Homework will be shared via Dojo every Friday.
- SPARX every Friday.
- SPaG books / Maths books (Year 6).
- Maths homework every Friday (Year 5).
- Reading.

*Homework at Rydon will be reviewed at some point this academic year.*

# Reading and phonics



Read 3 times a week, signed by an adult in reading records. Children in Year 5/6 can read independently, but an adult to sign off.

# Maths



- SPARX every Friday.
- Practising multiplication and division facts.



# How can I help at home?



Read with your child a minimum of three times a week. Ask your children questions about what they have read to help with comprehension and understanding of the text.

Practise times tables (2, 3, 4, 5, 6, 7, 8 9, 10, 11, 12 times tables).

Ensure that your children work independently when completing their homework but support them if they need it.

# Clubs



Club	Day	Year groups	Member of staff in charge
Netball	Monday - AS	5&6	Miss Boddy & Mrs Parsons
Choir	Tuesday - AS	KS2	Ms Pryce
Gymnastics	Tuesday - AS	KS2	Miss Thomas, Miss Barker & Mrs Cayless
Board games	Tuesday - AS	KS2	Mrs Welsh
Boys Football	Thursday - AM	Year 5	Mr Drake
Computing	Thursday - AM	KS2	Mr Ware
SPARX	Friday - LT	KS2	Mr Statham

# Events through the year



## Whole School Events

- Non-uniform days
- Anti bullying week
- Rydon Christmas Day
- Numbers day
- Safer internet day
- World Book Day
- Sports Day
- Summer Fair

## Year group events

22<sup>nd</sup> October – Yr6 Insight morning  
11<sup>th</sup> February – Yr5 Insight morning

16<sup>th</sup> June – 5P class assembly  
18<sup>th</sup> June – 5B class assembly

Year 5 – Activities week (TBC)  
w/c July 6<sup>th</sup> – Year 6 residential  
w/c July 6<sup>th</sup>, 13<sup>th</sup> – Year 5 Bike ability

16<sup>th</sup> July – Year 6 leavers assembly

Wherever possible, we will endeavour to keep the costs down on school trips. This could be by asking children to be dropped off or collected to places. We do rely on the voluntary contribution for events to take place. We have tried to spread events out through the year and we will let parents know in plenty of time when events are taking place.

# Roles and responsibilities



- Play leaders,
- Shed monitors,
- Reading buddies,
- Sports leaders,
- Librarians,
- Early lunch eaters,
- Tech. leaders,
- Logistics,
- Peer mediators
- Art leaders.

# School uniform



- School uniform to be worn each day. Children expected to wear shirt and tie unless due to sensory needs and spoken to SENCo.
- Sports top with black shorts/tracksuit bottoms expected to be worn on PE days (year 6 can wear hoodies on PE days). No branded tops to be worn.



# Forest School



**Your child will need wellies, a waterproof coat and trousers.**

**Old clothes must be worn to school...They will be getting muddy!**



# Rydon Out Of School Club



## BREAKFAST CLUB:

7:30AM – 8:45AM

£4.00

SELECTION OF BREAKFAST.

## AFTER SCHOOL CLUB: 3:15PM – 6:00PM

£7.50

SELECTION OF SNACKS AND FRUIT.

**PLEASE CONTACT** [ROOSC@RYDONPRIMARY.ORG.UK](mailto:ROOSC@RYDONPRIMARY.ORG.UK)

**OR WEBSITE** RYDON PRIMARY SCHOOL | BEFORE AND AFTER SCHOOL CLUB

# Free School Meals



- ❖ Income Support
- ❖ Income based Job seekers Allowance
- ❖ Income Related Employment and Support
- ❖ Guaranteed element of State Pension Credit
- ❖ Child Tax Credit without Working Tax Credit
- ❖ Support under Part VI of the Immigration & Asylum Act 1999
- ❖ Working Tax Credit run-on – paid for 4 weeks after you stop qualifying for Working Tax Credit
- ❖ Universal Credit



# Our New Inclusion Team



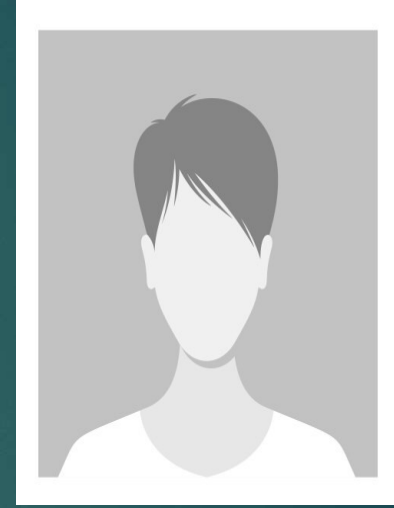
**Mrs Stacey Miller**  
Inclusion team



**Mrs Natalie Wells**  
Inclusion team

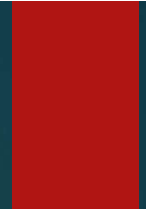


**Mrs Tracey Dainton**  
Family Support  
Worker



**Mrs Tracey Butler**  
Family Support  
Worker

Our school community has a duty to safeguard and promote the welfare of children who are in our care. This means that we have Safeguarding and Child Protection policies and procedures in place, which we refer to in our prospectus. All staff, including our volunteers and supply staff, must ensure that they are aware of our procedures.



# Parent Association

GET INVOLVED! ALL MONEY RAISED GOES STRAIGHT TO THE SCHOOL TO PAY FOR EXCITING RESOURCES AND OPPORTUNITIES FOR OUR CHILDREN.



# What are we working on as a School?



- A new reading approach for children once they finish Read, Write Inc.
- Closing the attainment gap for our pupil premium children.
- What we offer our children in terms of their personal development e.g. clubs, opportunities, leadership.
- Improving the behaviour of our children with a focus on play and lunchtimes.
- Improving our communication with parents and carers.
- Ensuring Rydon Primary School is prominent in our community.



**Any  
questions?**